



Young Families/Young Adult Meeting January 24, 2019



# 30 Healthcare Facilities in 23 Counties

Jackson (Teton)

Afton (Lincoln)

Kemmerer (Lincoln)

Evanston (Uinta)

Pinedale (Sublette)

Big Piney (Sublette)

Lander (Fremont)

Riverton (Fremont)

Powell (Park)

Cody (Park)

Worland (Washakie)

Lovell (Big Horn)

Basin (Big Horn)

Thermopolis (Hot Springs)

Rock Springs (Sweetwater)

Sheridan (Sheridan)

Buffalo (Johnson)

Casper (2 – Natrona)

Rawlins (Carbon)

Saratoga (Carbon)

Gillette (Campbell)

Douglas (Converse)

Laramie (Albany)

Sundance (Crook)

Newcastle (Weston)

Lusk (Niobrara)


Torrington (Goshen)

Wheatland (Platte)

Cheyenne (Laramie)







**For longer than we care to  
acknowledge, our community has  
been struggling with one medical  
challenge after another.**

Over the past four years we have seen  
- significant deterioration in services

Surgery all but abandoned

No after-hours surgery

ER from Level III to V

Maternity abandoned

- substantial declines in staffing.





# Community's Responsibility to build, grow, and preserve its medical system

- caring for our families, both older and younger generations
- helping our neighbors when they are most vulnerable,
- maintaining a quality of life for our loved ones at a reasonable cost
- growing the local economy







## WHERE WE'VE BEEN:

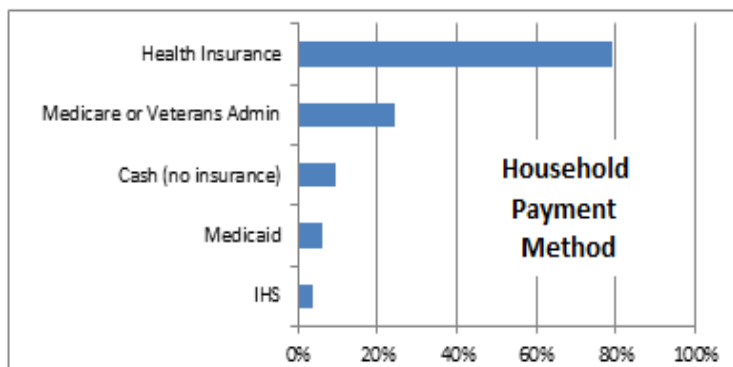
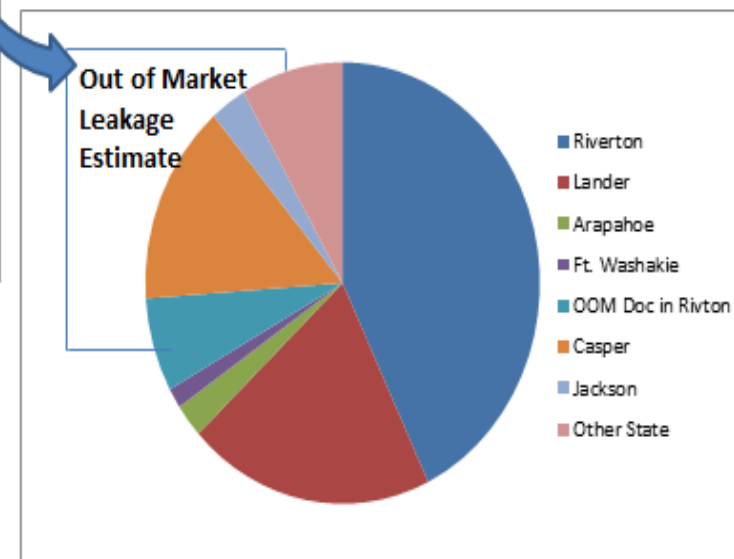
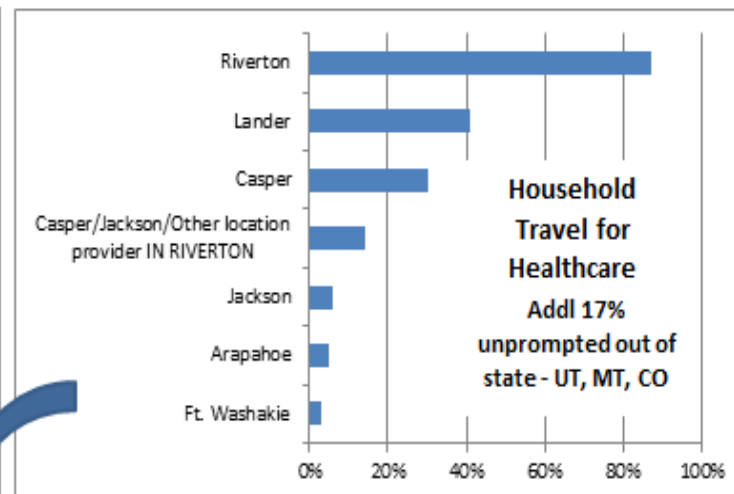
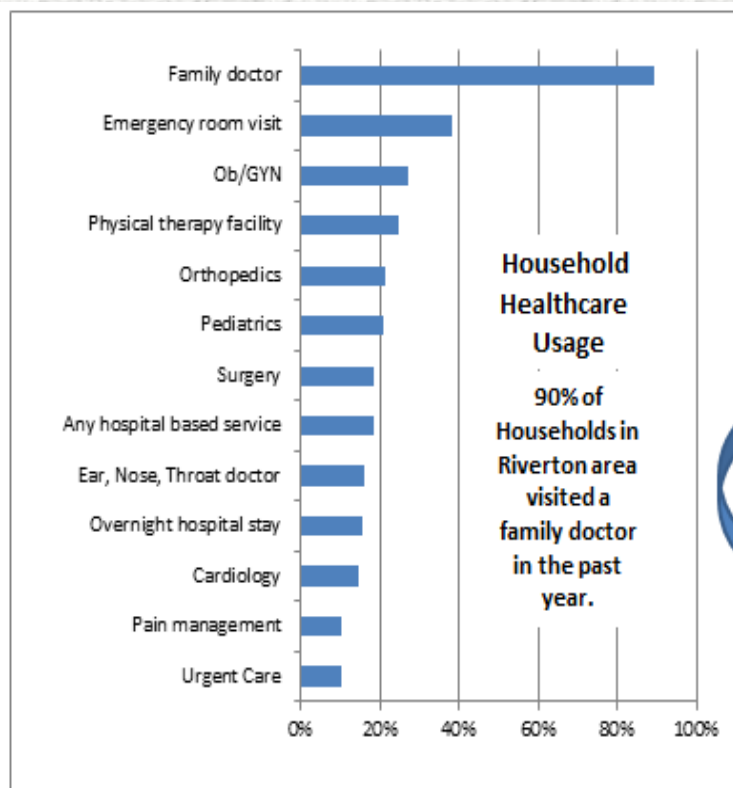
- Grassroots movement with significant community engagement
- Industry expert queries for knowledge and guidance
  - Mem'l Hospital of Converse County
  - Wyo Med Center and others
- Three-part local market assessment:
  - Consumer data by product line
  - Scientifically sound healthcare survey
  - Critical Issue focus groups
- Explored various options
- Fundraising, developing resources

# Doing Our Homework: Claritas Consumer Usage Reports

Users in past 3 years*	Fremont County	Riverton Area	% Riv Area	% Resvtn Area	% Dub Area	% Ldr Area
Any hospital service	10,190	4,860	48%	14%	6%	33%
Hospital emergency room	5,583	2,685	48%	14%	6%	32%
OB/GYN (*1 yr)	5,026	2,505	50%	16%	2%	32%
Any overnight stay	2,355	1,100	47%	13%	7%	33%
Orthopedics	2,173	983	45%	14%	6%	35%
Orthopedist (*1 yr)	2,104	953	45%	14%	5%	36%
Cardiac care	1,974	871	44%	14%	8%	34%
Pediatrics	1,475	773	52%	17%	1%	30%
Cancer/oncology	1,401	603	43%	13%	9%	34%
Neurology	1,064	505	47%	15%	5%	32%



# Community Survey Results



Survey error rate +/- 3.5 pts. Multiple responses allowed for these specific questions (limit 3 where appropriate).







**Focus Groups:** 10 groups of about 12 each

**OVERWHELMING PRIMARY CONCERN**

**E.R. E.R. E.R. E.R. E.R.**

treatment delays and outcomes due to substantial travel (and weather), kids and elderly. At heart there was gratitude for past experiences people had, **but fear it will be gone when needed.**

**Other Repeated Themes:** Significant travels OOM for care (Casper, et al), Having Babies in Riverton, Pricing/ costs way too high, Declines in care due to understaffing, Unfamiliar faces





## **Our goals: restore Riverton based services to include**

- 24/7 Surgical Services
- Maternity, Ob/Gyn
- Level III ER
- Recruit Riverton area-based doctors

## **Explore & develop necessary options**





**If we look to create something new:**

- WHAT CAN WE ECONOMICALLY SUPPORT?**
- WHAT DO OUR CONSUMERS NEED OR WANT?**
- WHERE WOULD WE PUT IT?**
- HOW DO WE FINANCE IT?**
- WHAT WILL IT COST?**

**Where do we start?**





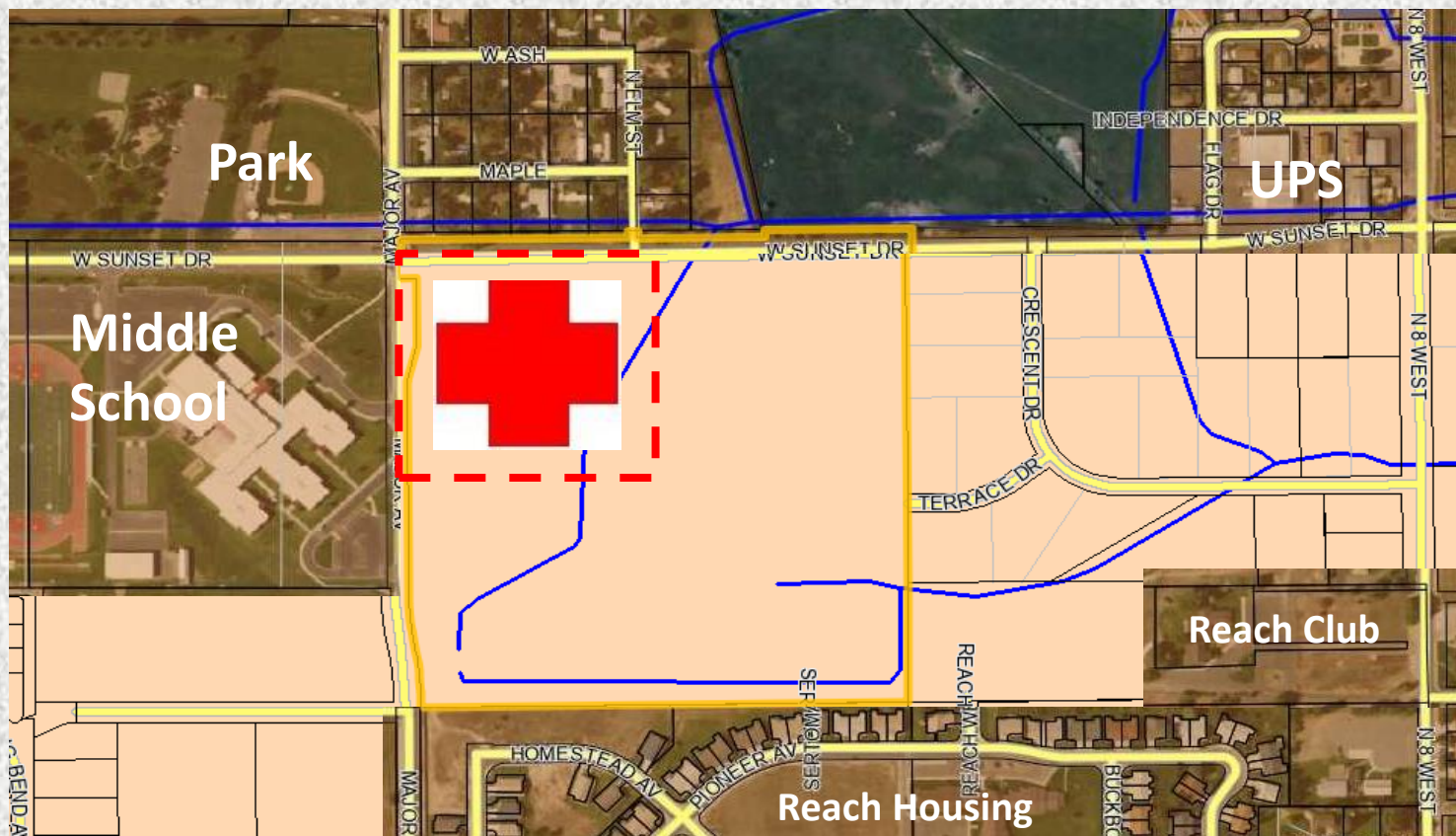


# Hospital Options?

## Land - 8 acres

## Donated by REACH Foundation

### Corner of Sunset & Major



**RIVERTON  
MEDICAL**  
DISTRICT



# Options? How to Fund

## Taxpayer supported hospital district

- Requires ballot initiative to establish district.
- Election to approve mill levy.
- Funding limitations.

## County Funding

- County received over \$3.6 million with sale of Rivton hospital. Can we access that?

## Govt Funding: USDA Community Facilities Program

- Loans, grants, loan guarantees
- Non-profits, public
- Facilities

## FHA 242 Mortgage Insurance for Hospitals

- Enhances credit-worthiness

## State Land & Investment Board

- Grants & loans

## Hospital Revenue Bonds

- High-yield municipal bonds sold through financial markets.
- Payment after expenses (net pledge).
- Municipalities under no obligation to pay back.
- Bond rating firms assess risk using feasibility study et al, to rate that establishes yield.



# Do we have a viable market for a some kind of new hospital?

## Determine Economic Feasibility & Sustainability

Using industry experts and specialists in rural healthcare:

- Estimate **the Revenue Value** of various healthcare service lines.
- Estimate the **Costs of Delivering** those services.
- Measure effect of other financial challenges (how we'd get paid).

## And/or for what, specifically?





**Feasibility Study Provider:**

**Stroudwater consultants play an active role in the national efforts to improve rural healthcare.**

*Their experience with hundreds of rural hospitals serves as their expertise base in creating solutions for resilient institutions to provide the very best care in our communities for the long haul.*

*Their counsel is down-to-earth and actionable.*

*Cost: \$154,000*





# What we'd do with the study

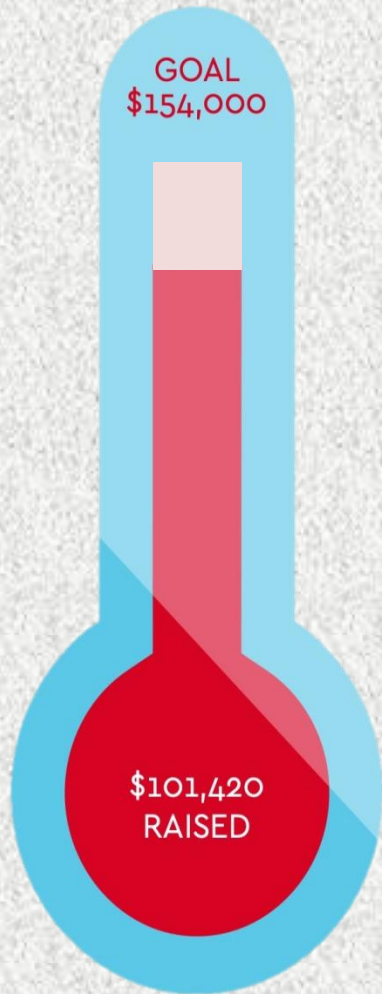
- Communicate results to public
- Determine what's next using study as our road map
- Plan to overcome obstacles in our path
- Consider strategic partnerships
- Use for grant solicitations
- Use with bond underwriters
- Use to recruit physicians



# WHAT'S YOUR WHY? To Ensure

- The health of our children while they are still in their formative years, and our parents, spouses, friends and other loved ones
- The right care is available and safely accessible when its urgently needed
- We move healthcare out of the profit-making cycle and make it affordable to those in need
- Increased competition = lower costs, more care options, better work environment
- To provide jobs and a growing local economy
- To further develop the quality of life we love here in Wyoming, and to be proud of our hometown.





# THE ASK: Fundraising support of feasibility study for a up to \$154,000

Here's how you can help ...

- Use pledge cards tonight, stop by bank, or visit RivertonMedicalDistrict.com to donate.
- We need ADVOCATES to **Share freely** (Facebook and GoFundMe).
- **Stay engaged.** Attend meetings or watch streams on Facebook.
- Look for *Hospital Watch* updates in Ranger every Wednesday, page 3. **Spread the word!**



Riverton Medical District





[rivertonmedicaldistrict.com](http://rivertonmedicaldistrict.com)

